



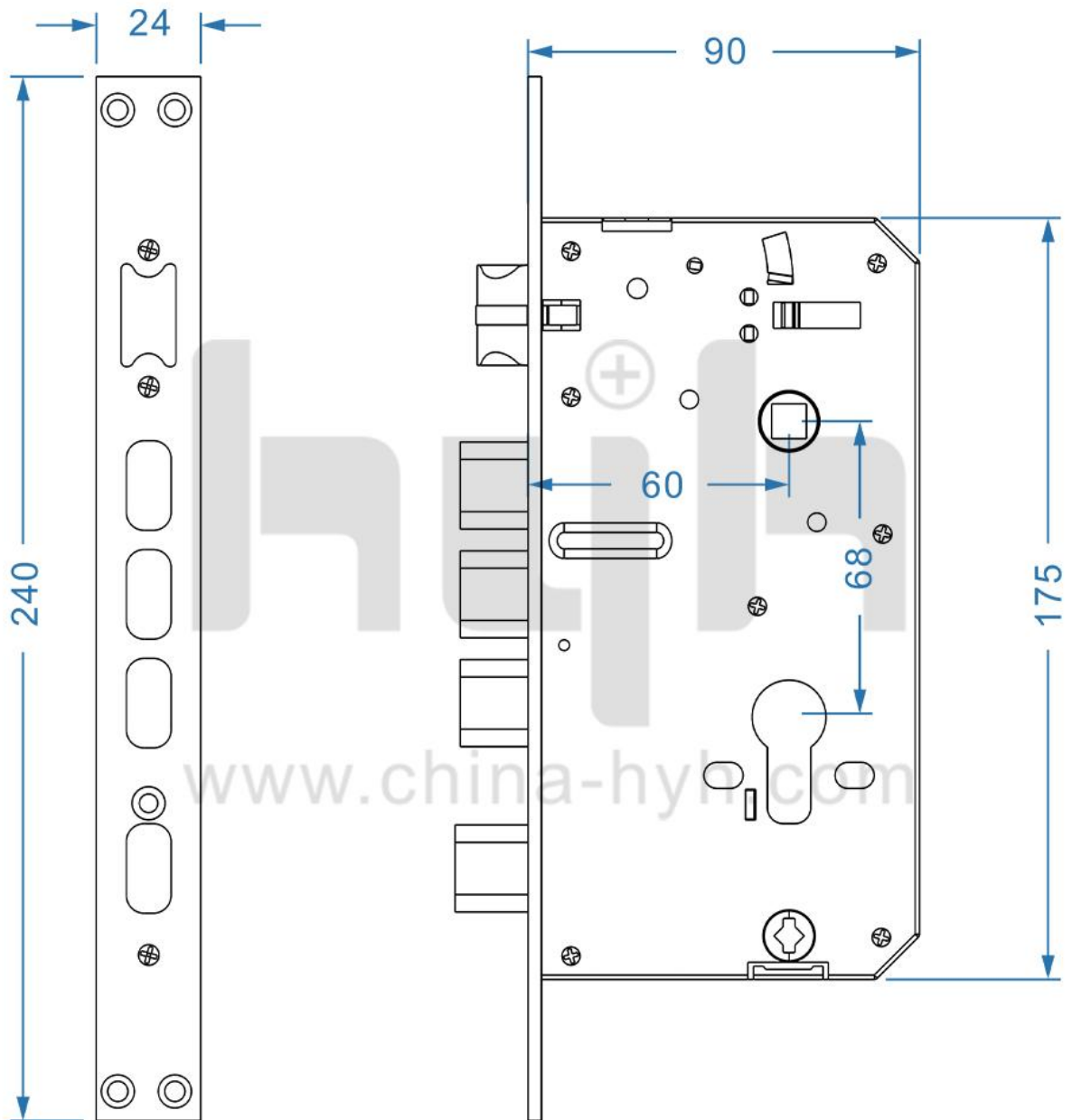
D3 Instruction



INNOVATION NEVER STOPS



INNOVATION NEVER STOPS



INNOVATION NEVER STOPS

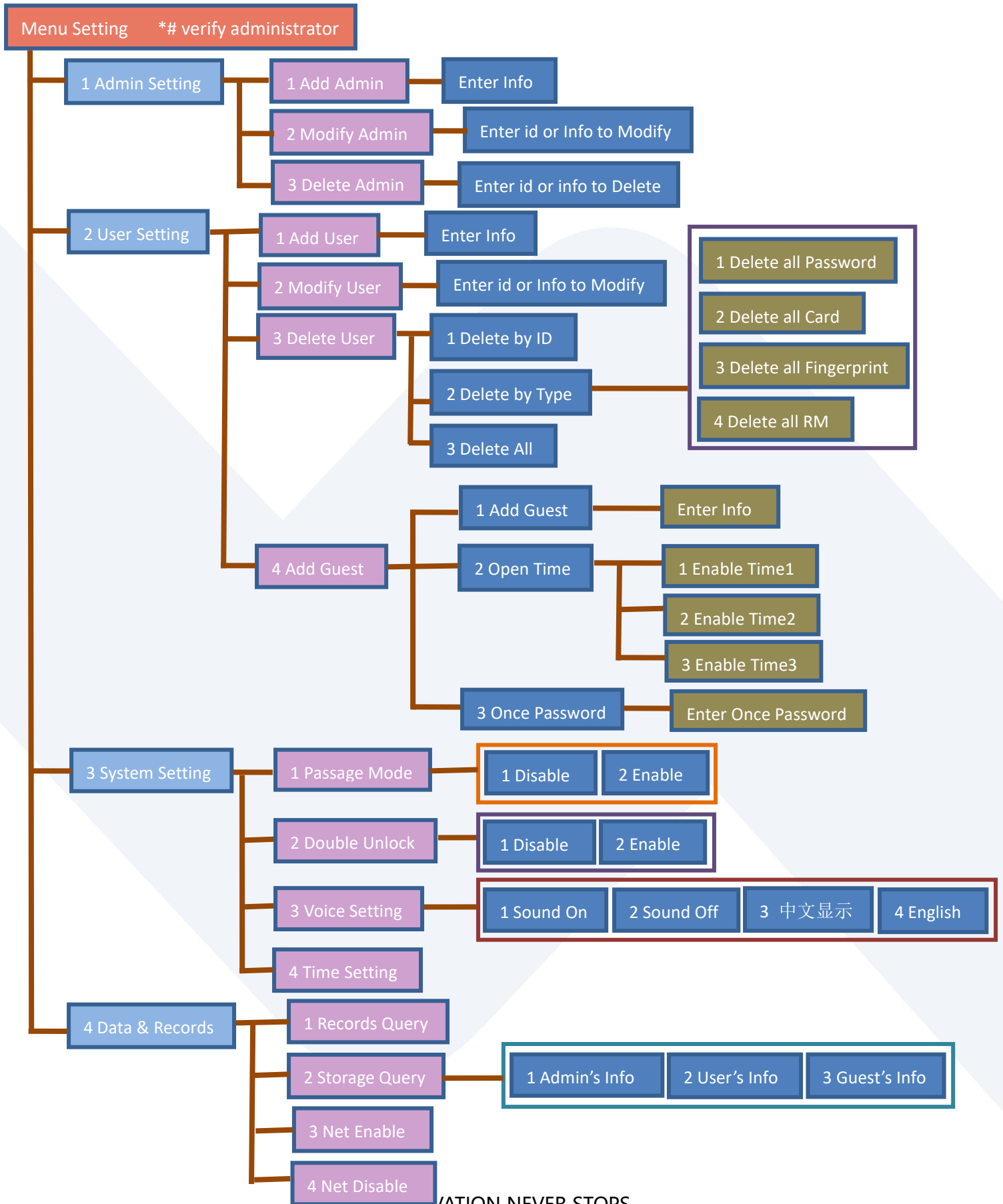


TECHINICAL SPECIFICATIONS

Item code	HC-D3
Material	Zinc Alloy Shell, In-mould Labeling
Lock body	6068 Steel Electrified Mortise Lock Body
Size	350*76mm, 4kg/set
Color	Matt black, Black Nickel, Rose Gold, Purple, Matt Gold Plating
Unlock way	Password+fingerprint+card+key+Tuya
Fingerprint Sensor	160 pixels
Total Capacity	889 pcs include card/fingerprint/password
App	Tuya
Alarm	Tamper alarm, Low battery alarm, Wrong-try Lockout
Battery	4~8 AA/1.5V alkaline batteries (Normally 12 months)
Available Door Thickness	40-120mm
Reset	Take off the battery cover and long press the reset button until hear "initialization success".

INNOVATION NEVER STOPS

Operation



INNOVATION NEVER STOPS



APP SETTING

Search Tuya Smart in app store or scan the QR code, register an account and login.

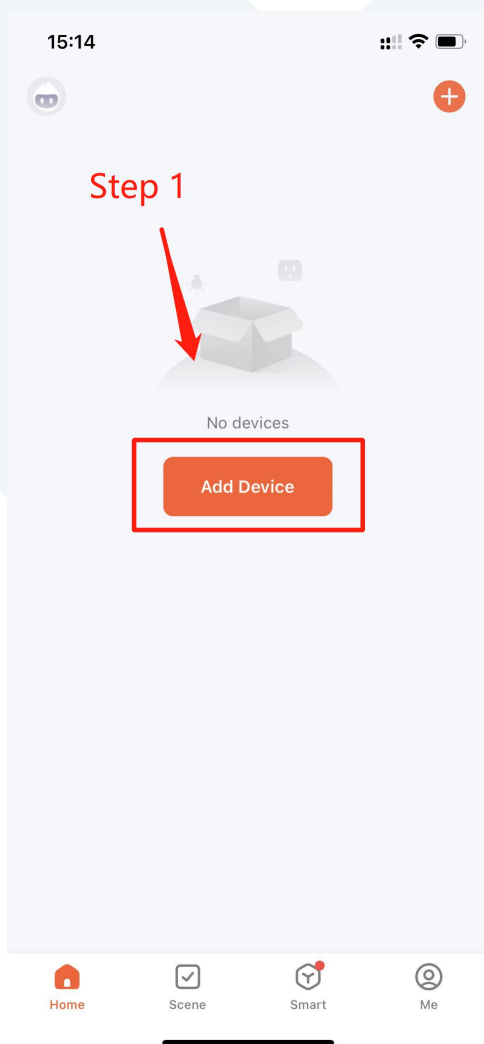


Before attempting to connect to the app, set the lock to wait for connecting:



Then please follow setting steps below:

Step 1: Add Device

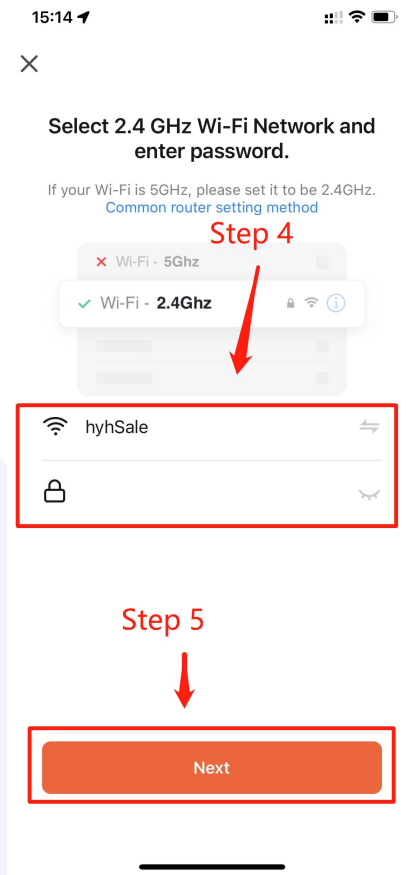


Step 2&3: Choose **Security&Video**, and then choose **Lock (Wi-Fi)**

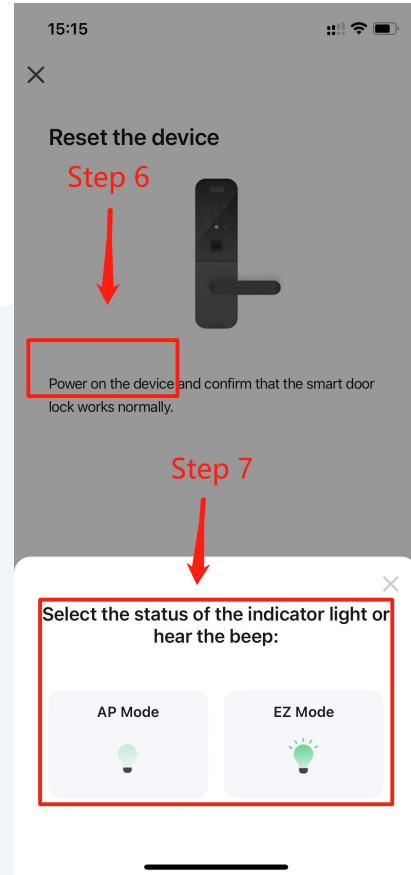


INNOVATION NEVER STOPS

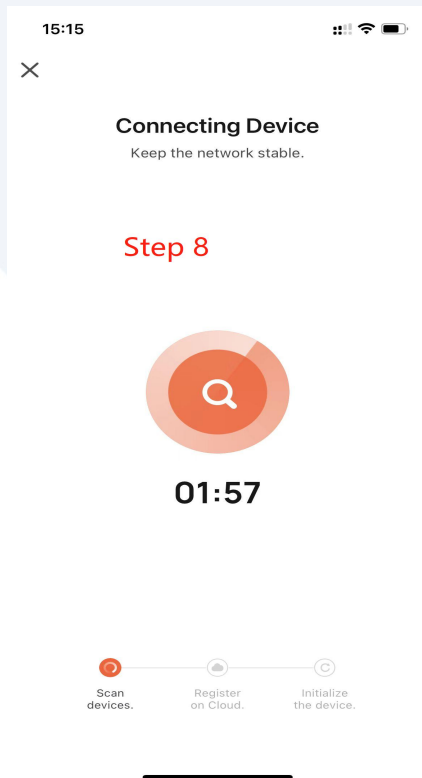
Step 4&5: Connect the available Wi-Fi and click **Next**



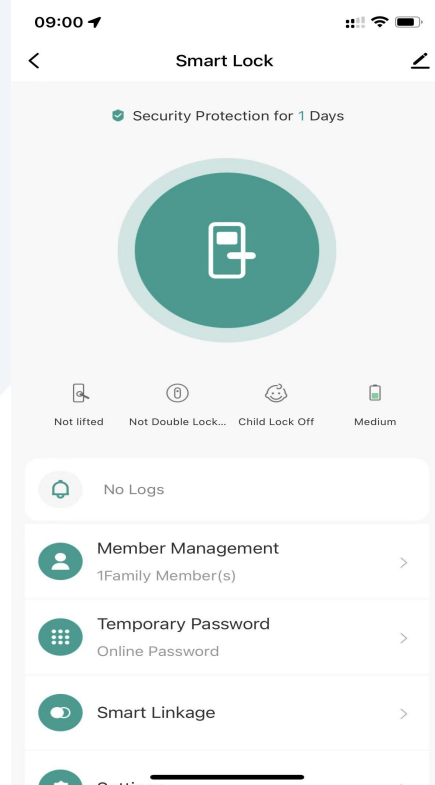
Step 6&7: Touch the lock screen to wake up the lock and ensure the Wi-Fi signal is good, click **Next**



Step 8: Wait for connecting



Step 9: Adding device successfully.

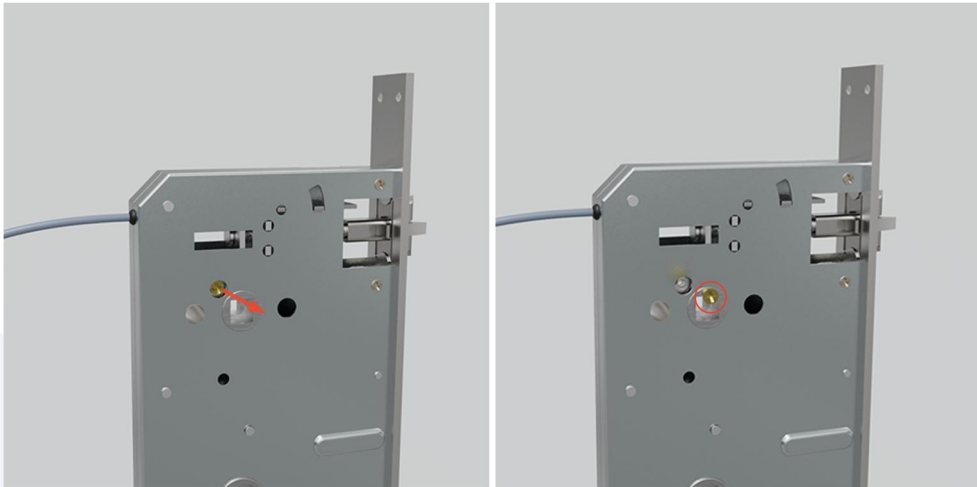


INNOVATION NEVER STOPS

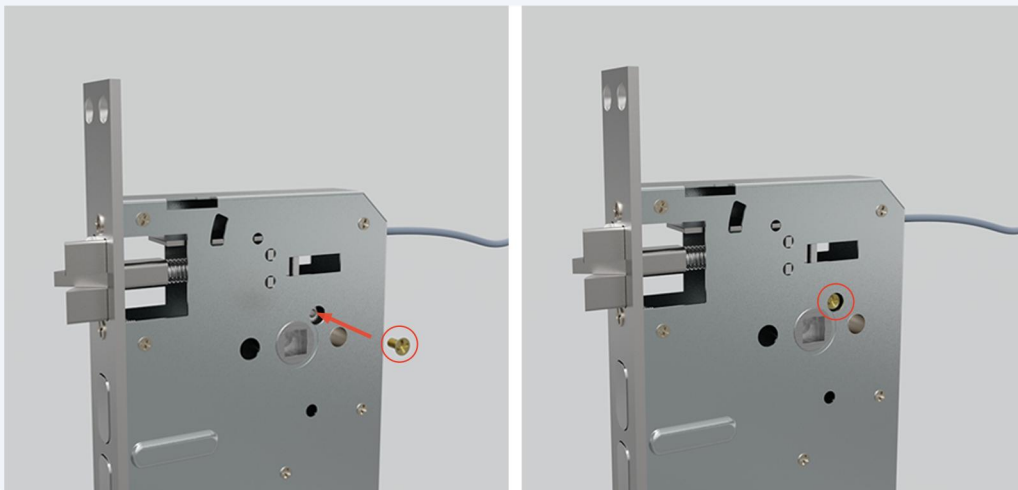
Right open to left open

(Keep the lock as the opening direction you want,
the screw is always fixed from opposite side)

1. Unscrew this screw on the lock body.



2. Screw it on the other side.



INNOVATION NEVER STOPS