



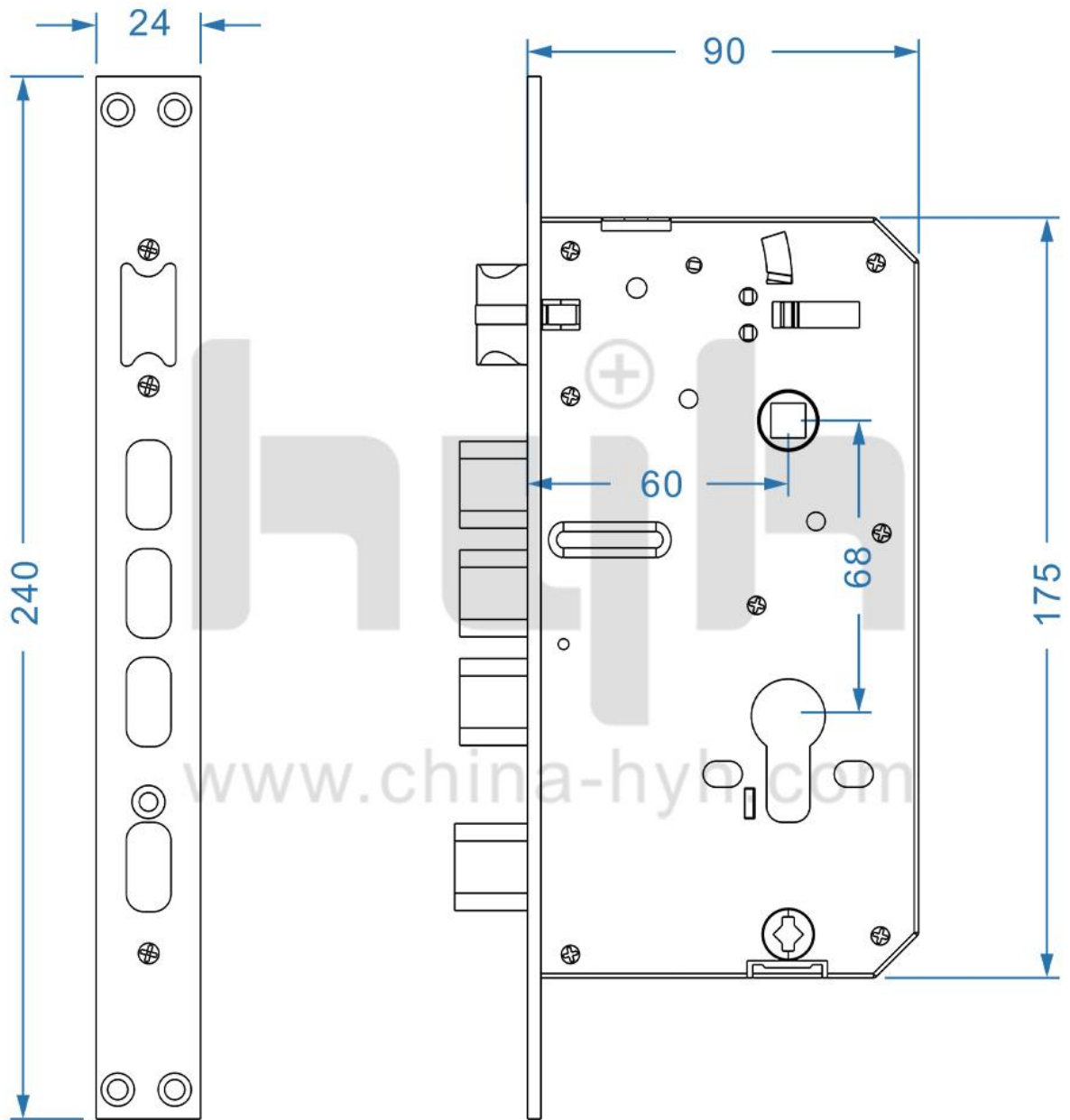
# V1 Instruction



INNOVATION NEVER STOPS



INNOVATION NEVER STOPS



INNOVATION NEVER STOPS

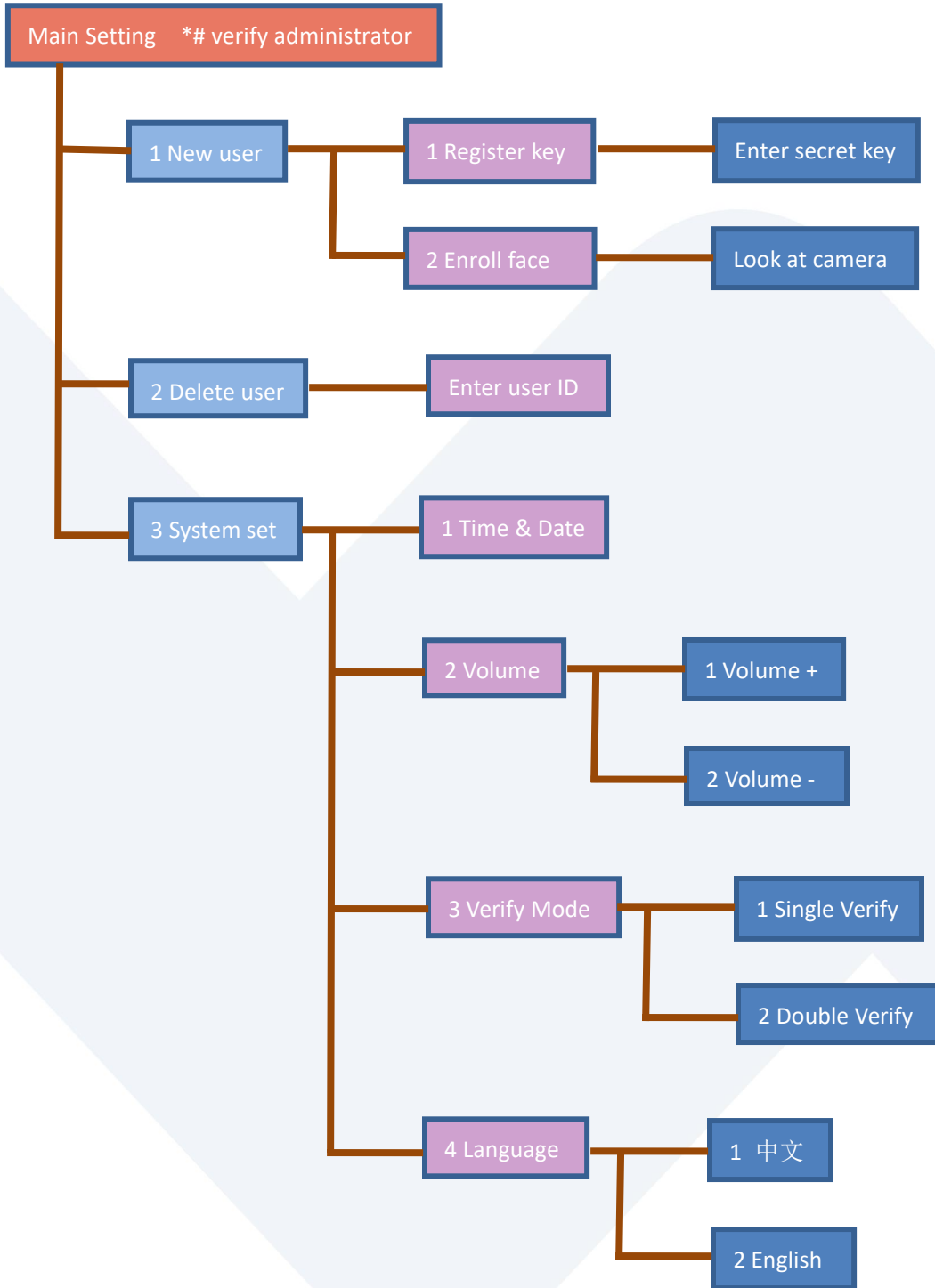


## TECHINICAL SPECIFICATIONS

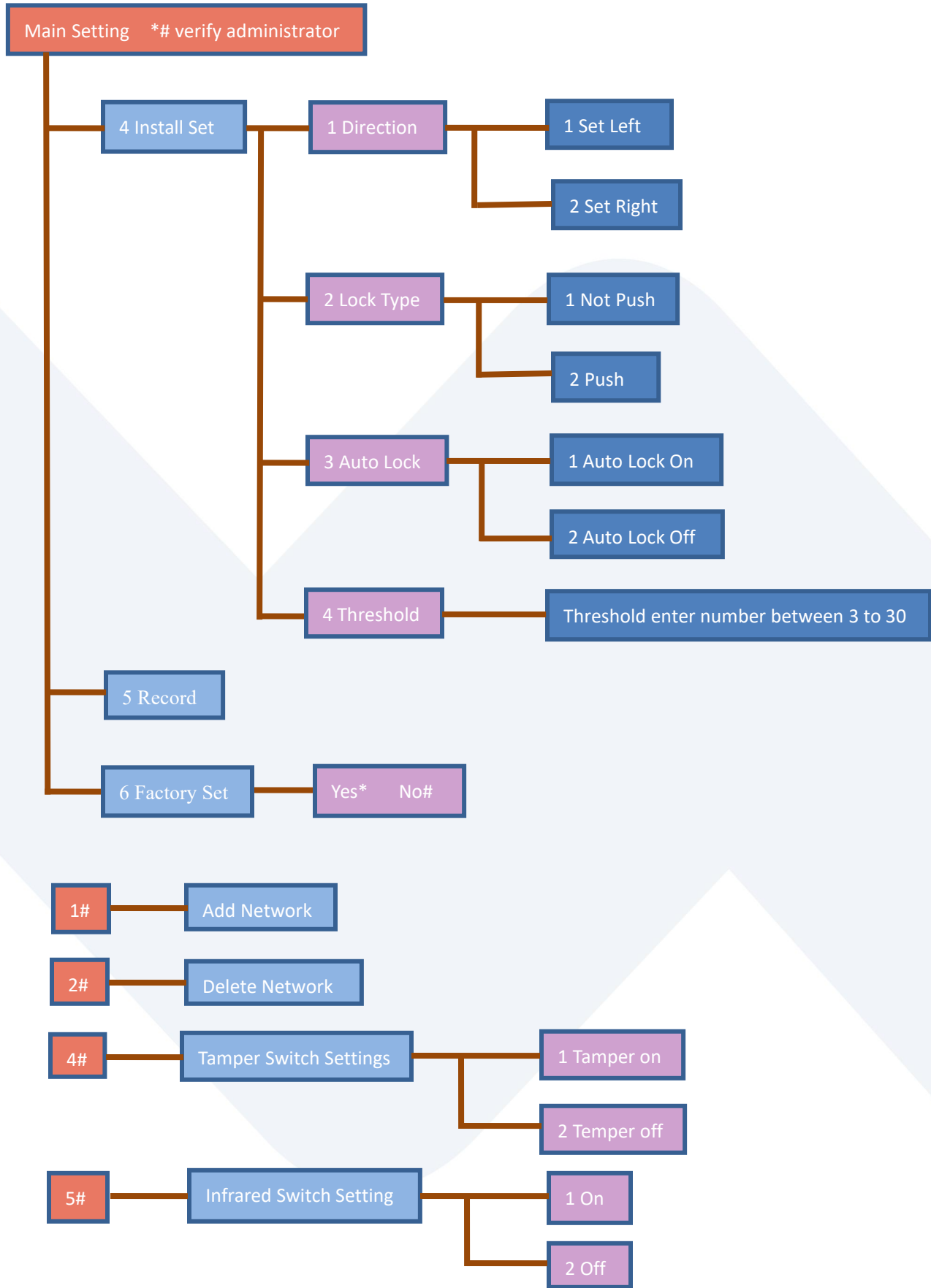
Item code	HC-V1
Material	Aluminum Alloy, with 6068 lock body
6 in 1 Unlocking ways	3D Face Recognition+Fingerprint+password+card+key+Tuya
Size	Front panel 65*435mm, Back panel 75*450mm
Battery	5000mA Lithium Battery
Camera	2,000,000 pixels, faces up to 50 pieces
Fingerprint sensor	160 pixels, up to 100 pieces fingerprints
Emergency Power Charge	USB Charge
Total capacity (face+fingerprint+password+card):	200 pcs
Available door thickness	40-100mm
Alarm	Tamper alarm, Low battery alarm, Wrong-Try lockout
Reset	Long press the button under the rear panel handle until hear “initialize” and wait till hear “initialize successfully”.

INNOVATION NEVER STOPS

# Operation



INNOVATION NEVER STOPS



INNOVATION NEVER STOPS



# APP SETTING

Search Tuya Smart in app store or scan the QR code, register an account and login.

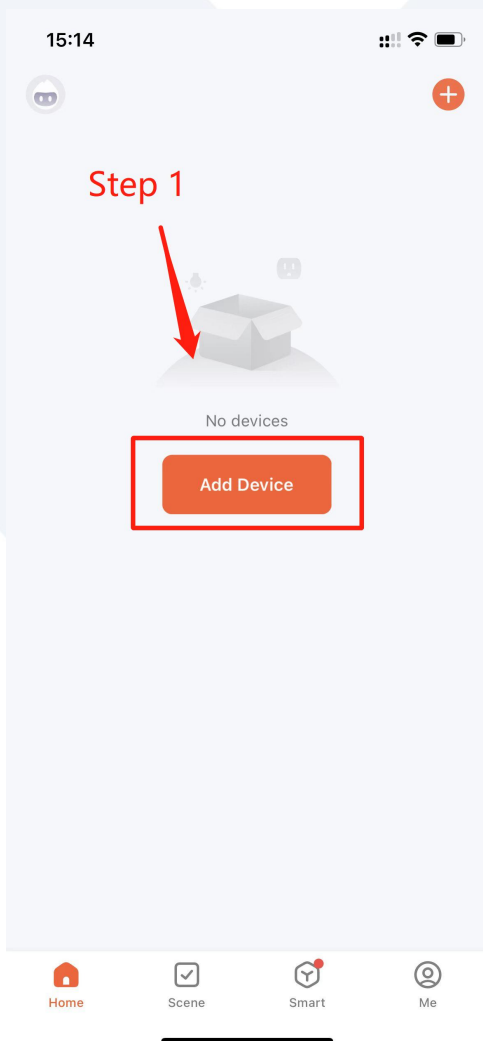


Before attempting to connect to the app, set the lock to wait for connecting:



Then please follow setting steps below:

Step 1: Add Device

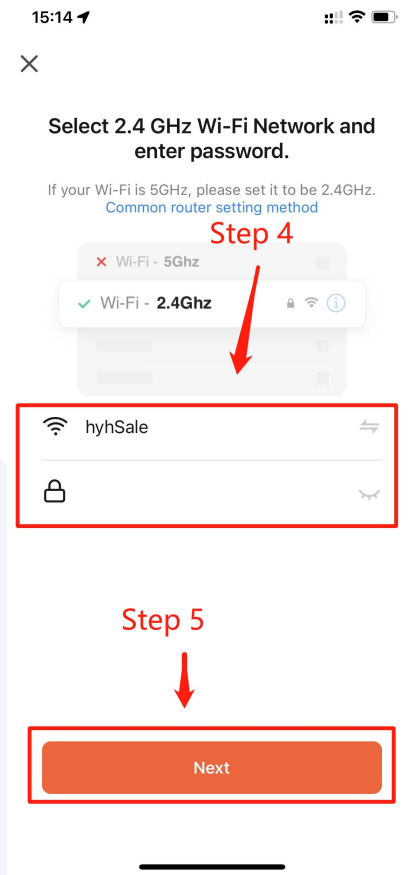


Step 2&3: Choose **Security&Video**, and then choose **Lock (Wi-Fi)**

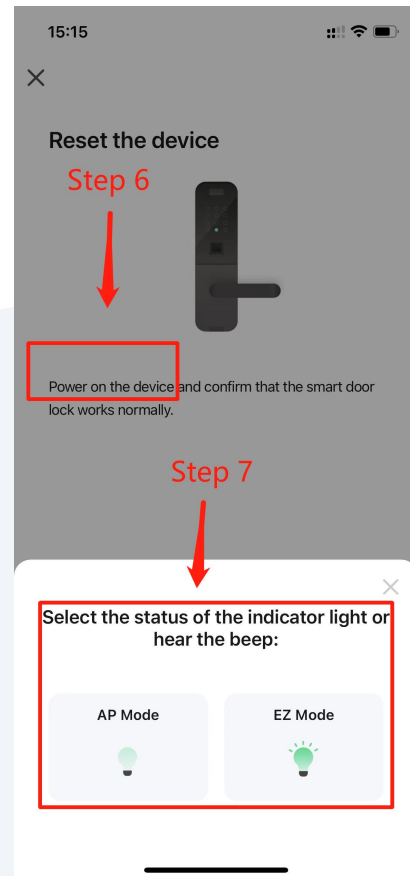


INNOVATION NEVER STOPS

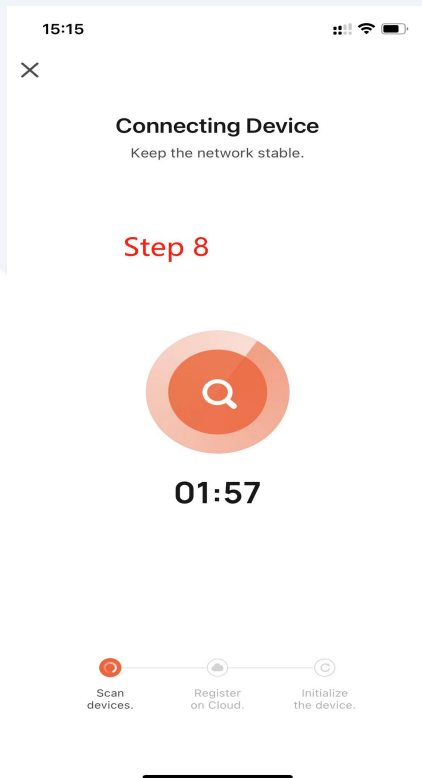
Step 4&5: Connect the available Wi-Fi and click **Next**



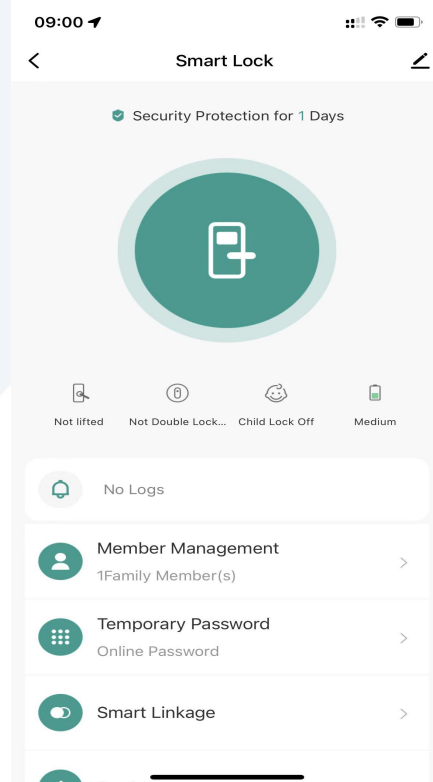
Step 6&7: Touch the lock screen to wake up the lock and ensure the Wi-Fi signal is good, click **Next**



Step 8: Wait for connecting



Step 9: Adding device successfully.



INNOVATION NEVER STOPS